



Chris van Uffelen

Living in Style

Architecture + Interiors

BRAUN

GOLD BAND ON BLACK

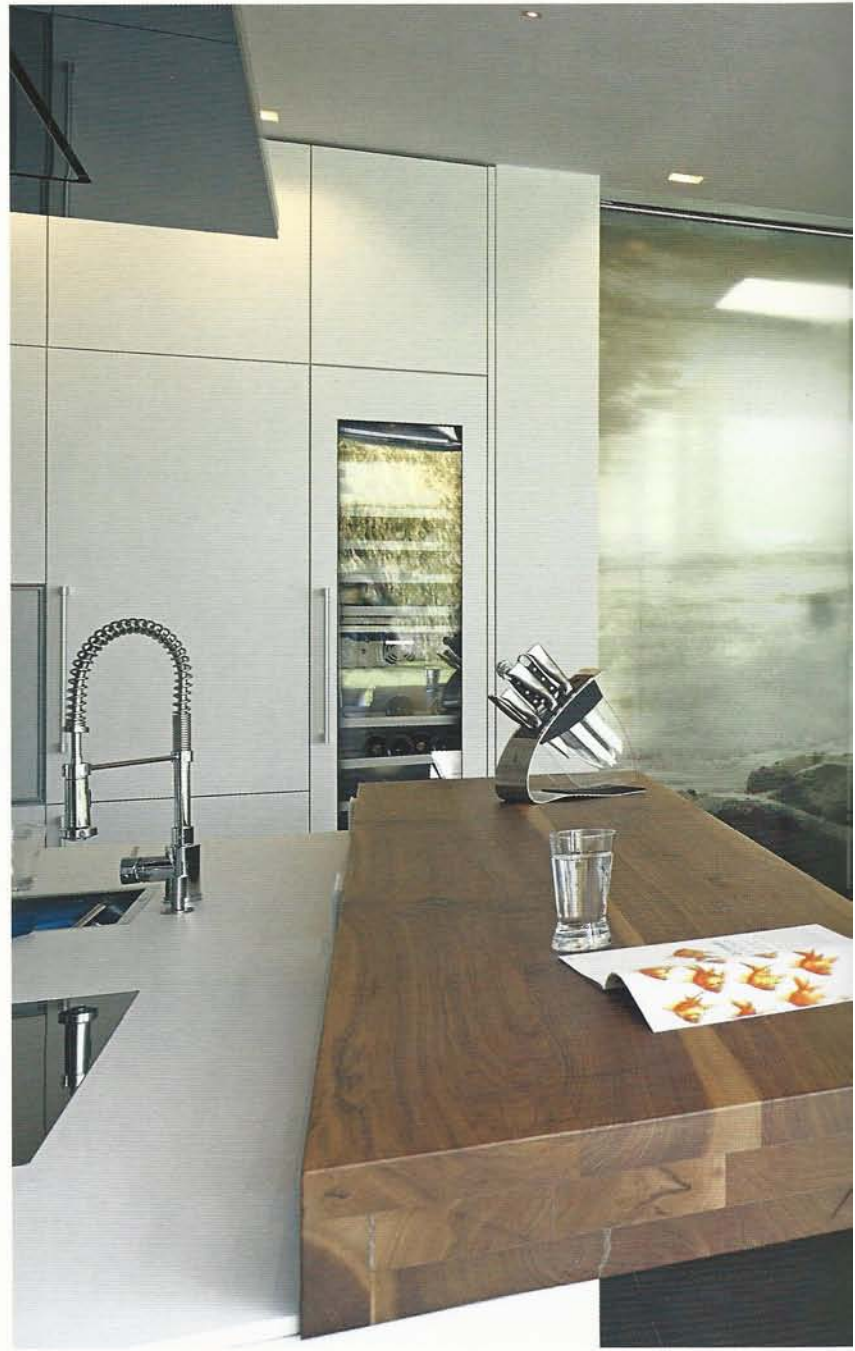
Pure gold: this treasure just screams quality.

Architect | fabi architekten
Gross floor area | 370 m²
Address | Flurstraße 7, 94405 Landau, Germany
Completion | 2011
Number of residents | 2 adults, 3 children



Approached from the south, this plot near the river Isar is in harmony with nature. Single-story volumes have been built facing the south in order to maximize the amount of sunlight reaching the open areas. The two-story volume towards the north-east is arranged to create a protective barrier around the pool and entrance courtyard. Living, cooking and dining areas are all housed in the single-story volume. The façades oriented towards the garden are glazed from floor to ceiling. A wellness area with a gym and sauna is located on the ground floor of the two-story volume, facing the garden and pool. The private rooms can be found on the upper floor. The exterior of the building is largely black.





This building was clad with RAL 9005 thanks to a new coating system (carbon fiber reinforcements and silicon carbide). 300 liters of black and 40 liters of metallic gold for the meandering band that runs over the volume.





42 m² living
50 m² sleeping
49 m² kitchen
15 m² bathrooms
67 m² fitness



BLACK ON WHITE

Perched like a nest in the treetops, this house offers perfect bird's-eye views of the surroundings.

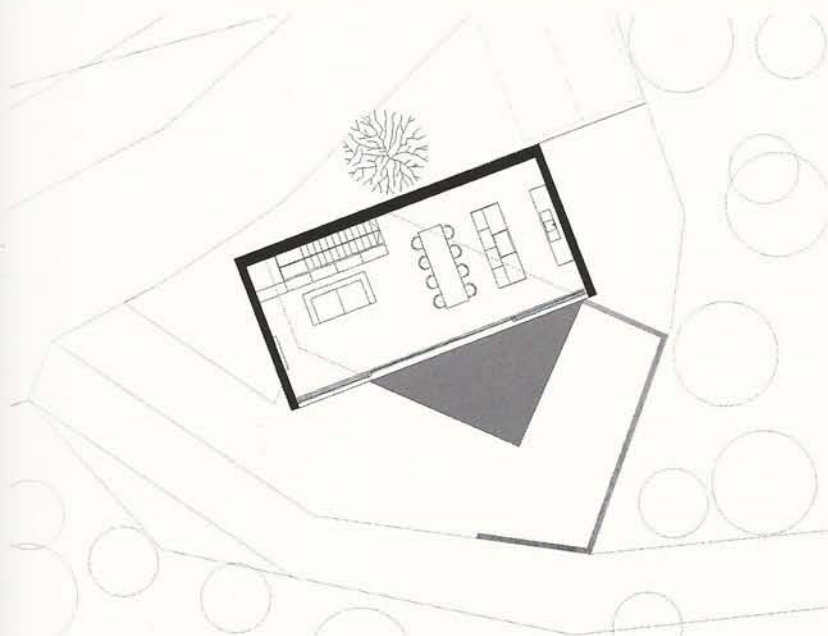
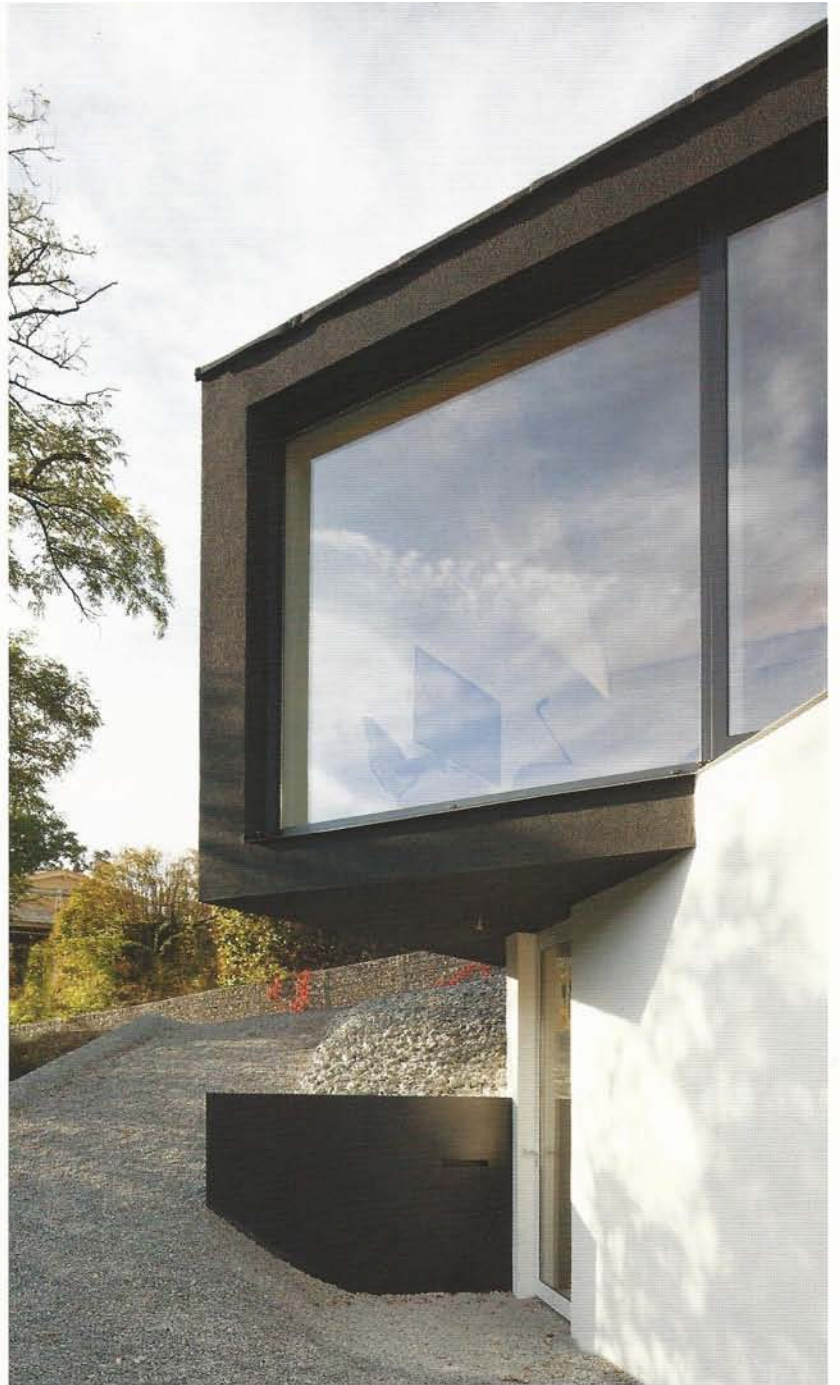
Architect | fabi architekten
Gross floor area | 100 m²
Address | Schönbergerstraße 46, 93173 Wenzenbach, Germany
Completion | 2012
Number of residents | 1 adult



This house comprises two basic volumes; a black saddle roof that is rotated and cantilevers out over the white flat-roof box beneath. This arrangement reduced the intervention into the sloping topography. The two volumes are open towards the nearby forest. The building presides over the site with a certain air of tranquility and self-confidence. The house is set into the sloping site and visitors enter the house area via a high entrance hall. A room for working, thinking, talking, eating, partying, and relaxing is located on the upper floor. At night, the house offers space for retreating and sleeping.







65 m² living
19 m² sleeping
8 m² bathrooms