

Less is not none. Less is enough. Less
luxury. **Living** with less. Less is suc-
cess? Then go for less! There should
be more less in excess. Because less
is more and more than enough. Can
it be too much? Is living **in** a state-of-
the-art understatement overstating
itself? Creating space is an art. So live
the art of reduction! Simply reduce
and thereby seduce. Unclutter your life
and concentrate on the essentials.
Because **Minimal** is more. The ele-
gance and allure of minimalist **Style**,
its efficiency, its calming and relaxing
effect, its sleek serenity ...
In short: **The Beauty of Space.**

Chris van Uffelen

The Beauty of Space

Living in Minimal Style

BRAUN



HOUSE IN STALLWANG

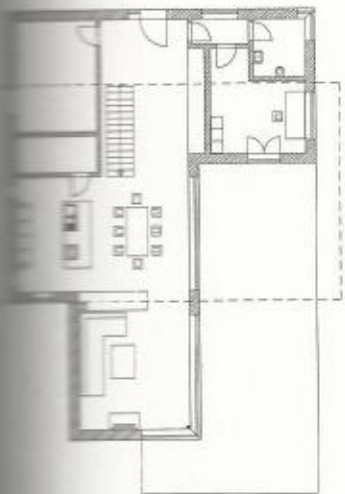
Opposites attract – light elegance fuses with traditional rustic charm.



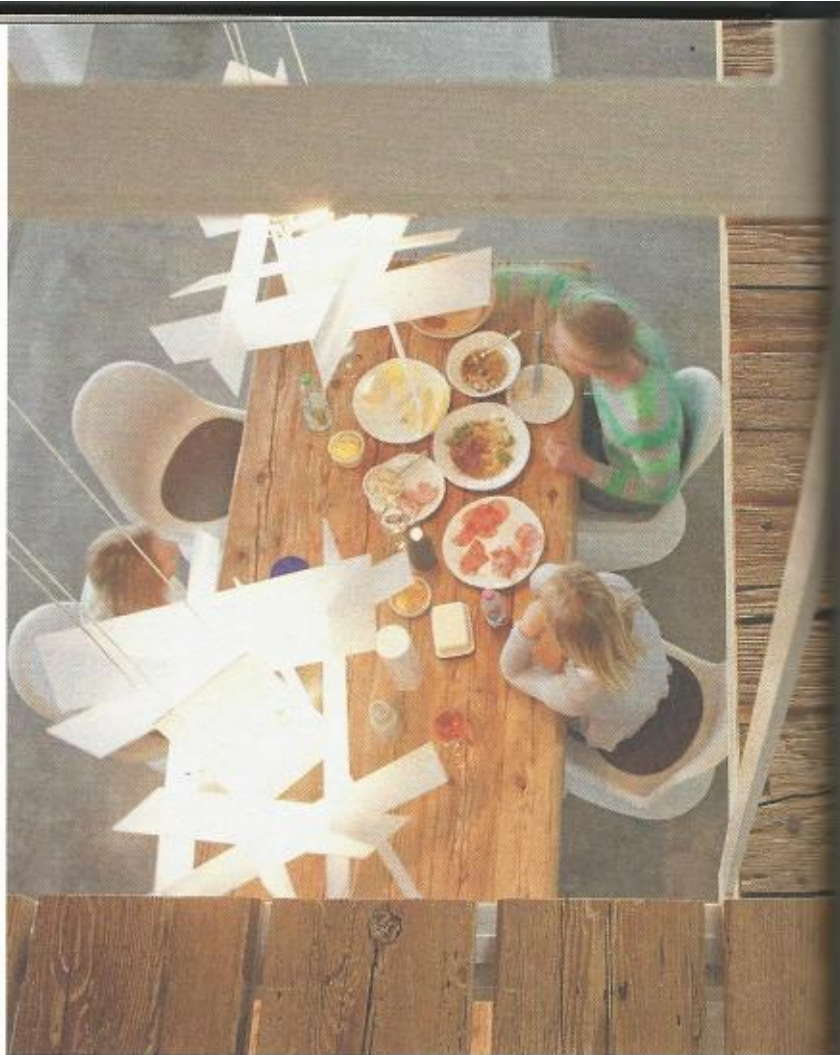


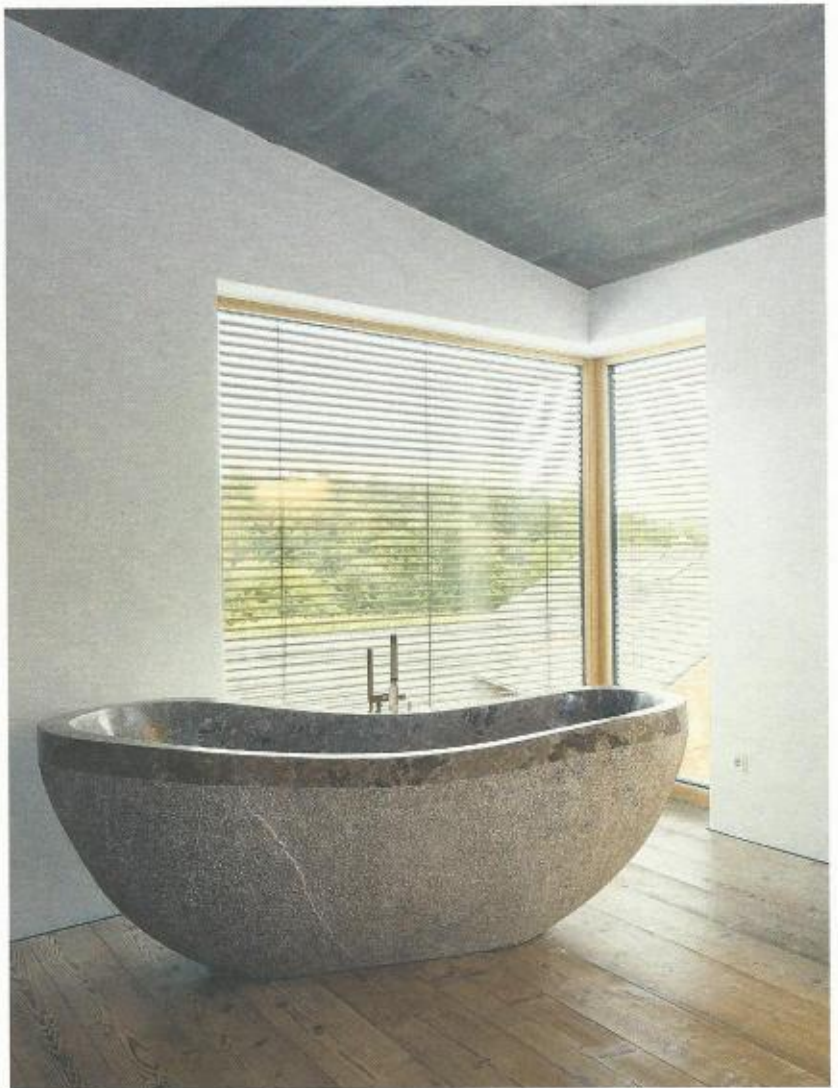
Architect | fabi architekten
Client | D. Urbanek, R. Parzinger
Gross floor area | 220 m²
Main materials | exposed concrete, wood
Address | Ried 8, 94375 Stallwang, Germany
Completion | 2014
Number of residents | 2 adults

The extreme contrast created by the use of exposed concrete and original timber elements gives this interior design a dynamic and edgy character. The building comprises two volumes, arranged one above the other; the upper volume has an aluminum saddle-roof and walls of dark-gray plaster, while the lower is clad with horizontal wooden planks. The materials used are complemented by natural stone elements and corten steel on the outside surfaces. Upon entering the ground floor, one walks directly into an open two-story living and dining area. The individual rooms are housed on the upper floor, which is arranged as a gallery level and accessible via a staircase with a steel railing.



25 m² living
40 m² sleeping
37 m² kitchen
35 m² bathroom





The wooden elements used in the design give the space a rustic charm. Particularly striking elements include the staircase, kitchen table and wooden flooring in the bathroom. The use of wood can also be seen on the building exterior, which gives the design a sense of unity and logic.